



JBL

DARE TO LISTEN!



DISCOVER EPIC SOUND

LATEST IN CAR AUDIO

SOUND THAT AMPLIFIES LIFE

Distinctive design. Perfect clarity. Maximum power. JBL understands how music enriches people's lives. Music fans everywhere rely on our award-winning audio to amplify their lifestyle. The music community depends on us for performances, mixes, and masters. From in-home to outdoor, cars to clubs, our constantly innovating audio technology enhances music experiences across the globe.



UPGRADE TO JBL

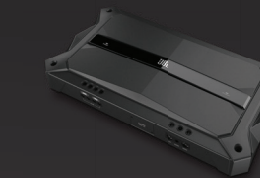
Inadequate volume? Substandard bass? Your original car audio will probably have limited power, harsh sound, and pitch distortion. Upgrade your sound system, not the car.



Replace your standard speakers with JBL for music that vibrates with warmth and clarity.



Add deep, uncompromising bass with a JBL subwoofer.



Complete your set. A JBL amplifier boosts volume and sounds crisp.

Only basic skills are needed to install JBL car audio products with our easy-to-follow installation manual and website tips. Or, request help of a car audio installer for a professional finish. Feel your music on the road with the latest JBL car audio line-up.



JBL CAR SPEAKERS

In-car sound masters. With input from car manufacturers, we've driven our years of audio expertise onto city streets and open roads. Choose our best-in-class technologies for the most exhilarating music experience.





JBL STAGE SERIES

ENTRY LEVEL SPEAKERS

Small car? No problem. JBL Stage Speakers will fit in almost any car. Awesome sound from compact rigid cones.

COMPACT
AFFORDABLE
VERSATILE



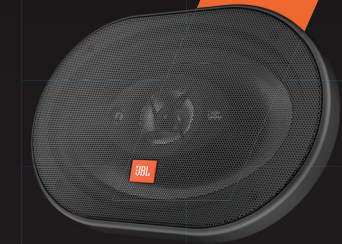
STAGE 402
4" (100mm)
Dual cone speaker



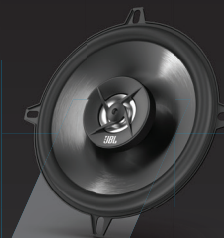
STAGE 602E
6-1/2" (165mm)
2-way speaker



STAGE 8602
6" x 8" (152mm x 203mm)
2-way speaker



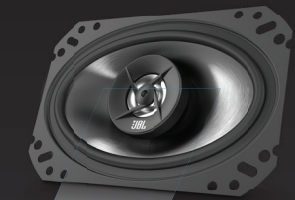
STAGE 9603E
6" x 9" (152mm x 229mm)
3-way speaker



STAGE 502
5-1/4" (130mm)
2-way speaker



STAGE 600CE
6-1/2" (165mm)
2-way component
speaker system



STAGE 6402
4" x 6" (101mm x 152mm)
2-way speaker

STAGE SERIES SPEAKERS



JBL CLUB SERIES

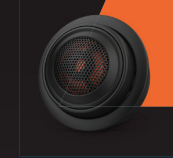
MID LEVEL SPEAKERS

JBL Club speakers attract those who demand more. High sensitivity speakers get the most power and highest quality out of your car entertainment, and add an extra dimension to your music.

**COMPACT
HIGH SENSITIVITY
POWER**



CLUB SERIES SPEAKERS



CLUB 750T
3/4" (19mm)
Tweeter



CLUB 3020
3-1/2" (87mm)
2-way speaker



CLUB 6500C
6-1/2" (165mm)
2-way component
speaker system



CLUB 6522
6-1/2" (160mm)
2-way speaker



CLUB 9630
6" x 9" (152mm x 230mm)
3-way speaker



CLUB 4020
4" (100mm)
2-way speaker



CLUB 5020
5-1/4" (130mm)
2-way speaker



CLUB 6520
6-1/2" (160mm)
2-way speaker



CLUB 6420
4" x 6"
(100mm x 152mm)
2-way speaker



CLUB 8620
6" x 8"
(152mm x 203mm)
2-way speaker

JBL STADIUM SERIES

PREMIUM SPEAKERS

Play loud. Stay strong. Introducing our JBL Stadium series. With pure balance and accuracy, enjoy your music without distortion, even at high volumes.

POWERFUL
PRECISE
TECH



STADIUM GTO620

6-1/2" (160mm)
2-way speaker



STADIUM GTO930

6" x 9" (87mm)
2-way speaker



STADIUM GTO860

6" x 8" (130mm)
2-way speaker



STADIUM GTO600C

6-1/2" (160mm)
2-way component system



STADIUM GTO20M

2" (50mm)
Dome midrange



STADIUM GTO750T

3/4" (19mm)
Tweeter

STADIUM SERIES SPEAKERS



JBL CAR AMPLIFIERS

Drive away with the power of live music. We've applied almost seventy years of live music experience into our car amplifiers for unrivalled sound quality and performance. Get going quickly with simple and intuitive installation, setup, and fine-tuning.



JBL STAGE SERIES ENTRY LEVEL AMPS

Compact. Compatible. Clear. Our JBL Stage amplifiers are adaptable to fit most cars. With Class D design, they come in 2 channel, 4 channel and Subwoofer versions. Whether you love pop, heavy metal, or electronic, we have the perfect EQ and filter settings to suit your sound.

**COMPACT
VERSATILE
CLASS D**



STAGE A6002
280-Watt
2-channel power amplifier



STAGE A6004
560-Watt
4-channel power amplifier



STAGE A9004
880-Watt
4-channel power amplifier



STAGE A3001
600-Watt
mono subwoofer amplifier



STAGE SERIES AMPLIFIERS



JBL CLUB SERIES

MID LEVEL AMPLIFIERS

High power. Low distortion. Experience new levels of clarity at any volume with the JBL Club series. With Class D sub outputs, these solid and highly efficient amps are built to last.

COMPACT
POWERFUL
SUB-CLASS-D



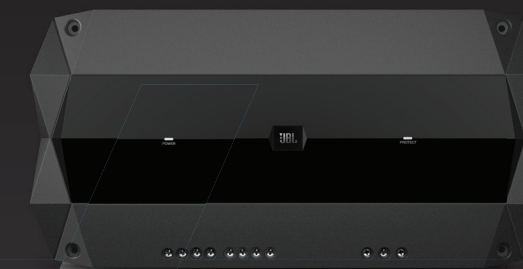
CLUB-5501

High-performance 1300-Watt mono subwoofer amplifier



CLUB-4505

High-performance 1800-Watt 5-channel power amplifier



CLUB-704

High-performance 1000-Watt 4-channel power amplifier



CLUB-A1KW

High-Performance 2400-Watt mono subwoofer amplifier



JBL GTR SERIES

PREMIUM AMPLIFIERS

Play music. Take calls. You'll immediately feel the sound quality of JBL GTR amplifiers which are Class D on all channels. Multi channel versions feature Clarify and BT, allowing for safe phone calls and the ability to listen to music straight from your smartphone.

POWERFUL
CLASS D
CONNECTIVITY



GTR-601

High-performance 1500-Watt
mono subwoofer amplifier



GTR-1001

High-performance 2600-Watt
mono subwoofer amplifier



GTR-104

High-performance 1500-Watt
4-channel power amplifier with
Bluetooth



GTR-7535

High-performance 2300-Watt
5-channel power amplifier with
Bluetooth

GTR SERIES AMPLIFIERS



JBL CAR SUBWOOFERS

Innovation from experience. We've packed years of live speaker development into designing the most reliable and high performing subwoofers. Whether it's maximum efficiency from a polypropylene woofer or exceptional control from a progressive spider cone, our subs outperform anything you've heard before.

JBL STAGE SERIES ENTRY LEVEL SUBWOOFERS

Want affordable deep level bass? JBL Stage subwoofers provide the legendary JBL sound. Whether in a standard enclosure, tube, or your own custom-built cabinet, you'll hear your music clearly both inside and outside the car.

**POWER
VERSATILE
RELIABLE**



STAGE 810

8" (200mm) 800-Watt subwoofer



STAGE 1010

10" (250mm) 900-Watt subwoofer



STAGE 1210

12" (300mm) 1000-Watt subwoofer



STAGE 800BA

8" (200mm) 100-Watt powered ported subwoofer enclosure



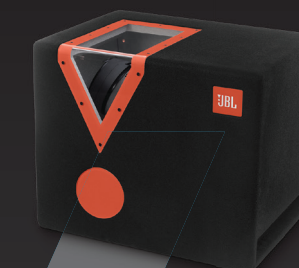
STAGE1220B

Dual 12" 2000-Watt subwoofer enclosure



STAGE 1200B

12" (300mm) 1000-Watt sealed subwoofer enclosure



CSX-1400BP

12" (300mm) 1400-Watt subwoofer bandpass enclosure



CS1214T

12" (300mm) 1000-Watt subwoofer ported tube enclosure

STAGE SERIES SUBWOOFERS



JBL CLUB SERIES

MID LEVEL SUBWOOFERS

Feel new depths to your music with the JBL Club Series subwoofers. Enjoy powerful, accurate and low distortion bass sensations. The unique SSI switch (2/4Ω) allows for any configuration.

POWER
SSI
ACCURATE



CLUB 1024

10" (250mm) 1000-Watt subwoofer with SSI



CLUB 1224

12" (300mm) 1100-Watt subwoofer with SSI



S2 1224SS

12" (300mm) 1100-Watt subwoofer ported enclosure with SSI



Club WS1200

12" (300mm) 1000-Watt subwoofer shallow mount with SSI

CLUB SERIES SUBWOOFERS

JBL BASSPRO SERIES ACTIVE SUBWOOFERS

Small sub. Big bass. The legendary BassPro series has compact designs and features Class D amplifiers for efficiency. Super simple controls allow for full integration with your car.

ACTIVE
CLASS D
COMPACT



BASSPRO MICRO

8" (200mm) 140-Watt
powered sealed dockable
subwoofer enclosure



BASSPRO SL

8" (200mm) 125-Watt
powered sealed under-seat
woofer enclosure



RBC

Optional RC for
BassPro SL
& BassPro Micro



Basspro Hub with RC

11" (279mm) 200-Watt
powered sealed
subwoofer enclosure

BASSPRO SERIES SUBWOOFERS



JBL STADIUM SERIES

PREMIUM SUBWOOFERS

Experience extremely powerful and accurate bass with the JBL Stadium Series. Designed for the most demanding music lover. Professional cooling technologies ensure that the immense power will never burn out. The unique SSI switch (2/4Ω) also allows for any configuration.

**LONG LASTING
EXTREME POWER**



Stadium 1024

High power 10" (250mm)
1350-Watt
subwoofer with SSI



Stadium 1224

High power 12" (300mm)
1500-Watt
subwoofer with SSI

STADIUM SERIES SUBWOOFERS

| SPEAKERS | STAGE 402 | STAGE 502 | STAGE 602E | STAGE 6402 |
|---------------------------|---------------------------------|-------------------------------------|-------------------------------------|--|
| Type | 4" (100mm) Dual cone speaker | 5-1/4" (130mm) 2-way car speaker | 6-1/2" (165mm) 2-way car speaker | 4" x 6" (101mm x 152mm) 2-way car speaker |
| High-Frequency Transducer | n.a. | PEI balanced dome tweeter | PEI balanced dome tweeter | PEI balanced dome tweeter |
| Power Handling, RMS | 20W | 35W | 45W | 35W |
| Power Handling, Peak | 60W | 105W | 135W | 105W |
| Frequency Response | 80Hz – 15kHz | 70Hz – 20kHz | 55Hz – 20kHz | 75Hz – 20kHz |
| Nominal Impedance | 4 ohms | 4 ohms | 4 ohms | 4 ohms |
| Sensitivity (2.83V@1m) | 85dB | 91dB | 91dB | 90dB |
| Crossover | None | Onboard | Onboard | Onboard |
| Controls/Adjustments | None | None | None | None |
| External Diameter | 102.5mm | 130mm | 166.4mm | 156.6mm x 103.1mm |
| Mounting Cutout Diameter | 94.6mm | 120mm | 145.7mm | 151.7mm |
| Mounting Depth | 39mm | 56mm | 58.7mm | 50.9mm |
| Grill | No | No | Yes | No |

| SPEAKERS | STAGE 8602 | STAGE 9603E | STAGE 600CE | CLUB 3020 |
|---------------------------|--|--|--|------------------------------------|
| Type | 6" x 8" (152mm x 203mm) 2-way car speaker | 6" x 9" (152mm x 229mm) 3-way car speaker | 6-1/2" (165mm) 2-way component speaker system | 3-1/2" (87mm) 2-way car speaker |
| High-Frequency Transducer | PEI balanced dome tweeter | PEI balanced dome tweeter | PEI balanced dome tweeter | PEI balanced dome tweeters |
| Power Handling, RMS | 60W | 70W | 50W | 20W |
| Power Handling, Peak | 180W | 210W | 150W | 60W |
| Frequency Response | 20Hz – 20kHz | 45Hz – 20kHz | 50Hz – 20kHz | 90Hz – 20kHz |
| Nominal Impedance | 4 ohms | 4 ohms | 4 ohms | 3 ohms |
| Sensitivity (2.83V@1m) | 91dB | 92dB | 90dB | 89dB |
| Crossover | Onboard | Onboard | Separate | Onboard |
| Controls/Adjustments | None | None | None | None |
| External Diameter | 220mm x 140.8mm | 234.6mm x 163.6mm | 166.4mm | 87mm |
| Mounting Cutout Diameter | 184.4mm | 220.9mm | 145.7mm | 75.5mm |
| Mounting Depth | 57mm | 74mm | 58.7mm | 35.7mm |
| Grill | No | Yes | Yes | No |

| SPEAKERS | CLUB 3020 | CLUB 4020 | CLUB 6420 | CLUB 5020 | CLUB 6520 |
|---------------------------|------------------------------------|---------------------------------|--|-------------------------------------|-------------------------------------|
| Type | 3-1/2" (87mm) 2-way car speaker | 4" (100mm) 2-way car speaker | 4" x 6" (100mm x 152mm) 2-way car speaker | 5-1/4" (130mm) 2-way car speaker | 6-1/2" (160mm) 2-way car speaker |
| High-Frequency Transducer | PEI balanced dome tweeters | PEI balanced dome tweeters | PEI balanced dome tweeters | PEI balanced dome tweeters | PEI balanced dome tweeters |
| Power Handling, RMS | 20W | 30W | 35W | 40W | 50W |
| Power Handling, Peak | 60W | 90W | 105W | 120W | 150W |
| Frequency Response | 90Hz – 20kHz | 75Hz – 20kHz | 75Hz – 20kHz | 75Hz – 20kHz | 55Hz – 20kHz |
| Nominal Impedance | 3 ohms | 3 ohms | 3 ohms | 3 ohms | 3 ohms |
| Sensitivity (2.83V@1m) | 89dB | 90dB | 91dB | 91dB | 92dB |
| Crossover | Onboard | Onboard | Onboard | Onboard | Onboard |
| Controls/Adjustments | None | None | None | None | None |
| External Diameter | 87mm | 102.4mm | 157mm x 99.5mm | 129mm | 158mm |
| Mounting Cutout Diameter | 75.5mm | 92.1mm | 140.4mm x 85.1mm | 113.6mm | 123.4mm |
| Mounting Depth | 47.6mm | 46.8mm | 43.9mm | 45mm | 44.6mm |
| Grill | No | No | No | No | Yes |

| SPEAKERS | CLUB 6522 | CLUB 8620 | CLUB 9630 | CLUB 6500C | CLUB 750T |
|---------------------------|-------------------------------------|--|--|--|----------------------------|
| Type | 6-1/2" (160mm) 2-way car speaker | 6" x 8" (152mm x 203mm) 2-way car speaker | 6" x 9" (152mm x 230mm) 3-way car speaker | 6-1/2" (160mm) 2-way component speaker system | 3/4" (19mm) Tweeter |
| High-Frequency Transducer | Edge driven dome tweeter | PEI balanced dome tweeters | PEI balanced dome tweeters | PEI balanced dome tweeters | PEI balanced dome tweeters |
| Power Handling, RMS | 60W | 55W | 80W | 60W | 45W |
| Power Handling, Peak | 180W | 165W | 240W | 180W | 135W |
| Frequency Response | 53Hz – 21kHz | 65Hz – 20kHz | 50Hz – 20kHz | 55Hz – 20kHz | 3kHz – 20kHz |
| Nominal Impedance | 3 ohms | 3 ohms | 3 ohms | 3 ohms | 3 ohms |
| Sensitivity (2.83V@1m) | 93dB | 93dB | 93dB | 92dB | 92dB |
| Crossover | Onboard | Onboard | Onboard | Separate | Onboard |
| Controls/Adjustments | None | None | None | None | None |
| External Diameter | 159mm | 220mm x 142.2mm | 236.5mm x 163mm | 158mm | 56mm |
| Mounting Cutout Diameter | 127mm | 182.6mm x 125.6mm | 214.6mm x 144.6mm | 123.4mm | 40mm |
| Mounting Depth | 51.5mm | 58.5mm | 77.8mm | 44.6mm | 20mm |
| Grill | Yes | No | Yes | Yes | Yes |

SPECS OVERVIEW

| SPEAKERS | STADIUM GTO620 | STADIUM GTO930 | STADIUM GTO860 |
|---------------------------|-------------------------------------|--|--|
| Type | 6-1/2" (165mm) 2-way car speaker | 6" x 9" (152mm x 228mm) 3-way car speaker | 6" x 8" (152mm x 203mm) 2-way car speaker |
| High-Frequency Transducer | Edge-driven soft dome tweeter | Edge-driven soft dome tweeter | Edge-driven soft dome tweeter |
| Power Handling, RMS | 75W | 110W | 100W |
| Power Handling, Peak | 225W | 330W | 300W |
| Frequency Response | 45Hz – 23kHz | 35Hz – 30kHz | 40Hz – 23kHz |
| Nominal Impedance | 2,5 ohms | 2,5 ohms | 2,5 ohms |
| Sensitivity (2.83V@1m) | 95dB | 96dB | 94dB |
| Crossover | Onboard | Onboard | Onboard |
| Controls/Adjustments | Tweeter level, 0dB / +3dB | Tweeter level, 0dB / +3dB | Tweeter level, 0dB / +3dB |
| External Diameter | 156mm | 240.3mm x 168.6mm | 205mm x 148mm |
| Mounting Cutout Diameter | 129mm | 220.8mm x 147.8mm | 180mm x 123mm |
| Mounting Depth | 52mm | 80mm | 59mm |
| Grill | Yes | Yes | No |

| SPEAKERS | STADIUM GTO600C | STADIUM GTO20M | STADIUM GTO750T |
|---------------------------|---|----------------------------|-------------------------------|
| Type | 6-1/2" (165mm) 2-way component car speaker | 2" (50mm) Dome midrange | 3/4" (19mm) Tweeter |
| High-Frequency Transducer | Edge-driven soft dome tweeter | Dome midrange | Edge-driven soft dome tweeter |
| Power Handling, RMS | 100W | 65W | 50W |
| Power Handling, Peak | 300W | 195W | 150W |
| Frequency Response | 45Hz – 25kHz | 500Hz – 7kHz | 2k – 25kHz |
| Nominal Impedance | 2,5 ohms | 2,5 ohms | 2,5 ohms |
| Sensitivity (2.83V@1m) | 93dB | 90dB | 93dB |
| Crossover | External | External | Onboard |
| Controls/Adjustments | Tweeter level, 0dB / +3dB | Tweeter level, 0dB / +3dB | Tweeter level, 0dB / +3dB |
| External Diameter | 156mm | 78mm | 35.7mm |
| Mounting Cutout Diameter | 129mm | 65mm | 35.7mm |
| Mounting Depth | 52mm | 28mm | 13mm |
| Grill | Yes | Yes | Yes |

| AMPLIFIERS | CLUB 704 | CLUB 4505 | CLUB 5501 | CLUB AK1W |
|-------------------------------|---|---|--------------------------|---------------------------|
| Number of Channels/Type | 4 Channels | 5 Channels | Mono / Subwoofer | Mono / Subwoofer |
| 4-Ohm Power Output | 70W rms | 45W rms; 320W rms | 370W rms | 1000W |
| 2-Ohm Power Output | 100W rms | 65W rms; 500W x 1 rms | 550W rms | 600W |
| Bridged Power Output | 200W x 2 into 4 ohms* | 130W x 2 into 4 ohms* | - | - |
| Total Peak Power Output | 1000W | 1800W | 1300W | 2400W |
| Signal-to-Noise Ratio | >85db | >85db (full) >80db (sub) | >80db | >75dB |
| Frequency Response | 10Hz - 40kHz | 10Hz - 40kHz (full range) 10Hz - 320Hz (sub) | 10Hz-320Hz | 10Hz - 320Hz |
| Input Sensitivity | 200mV - 20V | 200mV - 20V | 200mV - 20V | 100mV - 10V |
| Variable Electronic Crossover | Yes | Yes | Yes | Yes |
| Variable Bass Boost | Yes | Yes | Yes | Yes |
| Input Connections | High & low-level (RCA) | High & low-level (RCA) | High & low-level (RCA) | High & low-level (RCA) |
| Speaker Connections | 4 | 5 | 2 | 2 |
| Signal Output Connections | Yes | No | No | No |
| Dimensions (L x W x H) | 375mm x 189.4mm x 59mm * <1.0% THD + N | 400mm x 189.4mm x 59mm | 243.5mm x 189.4mm x 59mm | 59.2mm x 189.2mm x 58.4mm |

| AMPLIFIERS | STAGE A6002 | STAGE A6004 | STAGE A9004 | STAGE A3001 |
|-------------------------------|---|---------------------------|---------------------------|------------------------|
| Number of Channels/Type | 2 channels | 4 channels | 4 channels | Mono / Subwoofer |
| 4-Ohm Power Output | 60W | 60W | 90W | N/A |
| 2-Ohm Power Output | 70W | 70W | 110W | 300W |
| Bridged Power Output | 140W | 140W | 220W | N/A |
| Total Peak Power Output | 280W | 560W | 880W | 600W |
| Signal-to-Noise Ratio | >75dB | >75dB | >75dB | >75dB |
| Frequency Response | 20Hz - 20kHz | 20Hz - 20kHz | 20Hz - 20kHz | 10Hz - 320Hz |
| Input Sensitivity | 200mV - 20V | 200mV - 20V | 200mV - 20V | 200mV - 5V |
| Variable Electronic Crossover | Yes | Yes | Yes | Yes |
| Variable Bass Boost | Yes | Yes | Yes | Yes |
| Input Connections | High & low-level (RCA) | High & low-level (RCA) | High & low-level (RCA) | High & low-level (RCA) |
| Speaker Connections | 2 | 4 | 4 | 2 |
| Signal Output Connections | No | L & R line level (summed) | L & R line level (summed) | No |
| Dimensions (L x W x H) | 50mm x 145mm x 156.6mm * <1.0% THD + N | 50mm x 145mm x 193.6mm | 50mm x 145mm x 268.6mm | 50mm x 145mm x 241.6mm |

| AMPLIFIERS | GTR-104 | GTR-7535 | GTR-601 | GTR-1001 |
|-------------------------------|--|---|----------------------------|----------------------------|
| Number of Channels/Type | 4 Channels | 5 Channels | Mono / Subwoofer | Mono / Subwoofer |
| 4-Ohm Power Output | 100Wrms x 4* | 75Wrms x 4* | 380Wrms x 1* | 700Wrms x 1* |
| 2-Ohm Power Output | 120Wrms x 4* | 100Wrms x 4* | 600Wrms x 1* | 1000Wrms x 1* |
| Bridged Power Output | 240Wrms x 2* | 200Wrms x 2* | - | - |
| Total Peak Power Output | 1500W | 2300W | 1500W | 2600W |
| Signal-to-Noise Ratio | >75dB | >75dB>80dB | >80dB | >80dB |
| Frequency Response | 10Hz - 100kHz | 10Hz - 100kHz (main) 10Hz - 320Hz (sub) | 15Hz - 320Hz | 15Hz - 320Hz |
| Input Sensitivity | 200mV-20V | 200mV-20V | 200mV-20V | 200mV-20V |
| Variable Electronic Crossover | Yes | Yes | Yes | Yes |
| Variable Bass Boost | Bass EQ | Yes | Yes | Bass EQ |
| Input Connections | High & low-level (RCA) | High & low-level (RCA) | High & low-level (RCA) | High & low-level (RCA) |
| Speaker Connections | 4 | 5 | 2 | 2 |
| Signal Output Connections | Yes | No | No | No |
| Dimensions (L x W x H) | 266mm x 180mm x 55mm *<0.1% THD + N | 335.3mm x 179.6mm x 54.2mm | 265.3mm x 179.6mm x 54.2mm | 335.3mm x 179.6mm x 54.2mm |

| AMPLIFIED SUBWOOFERS | BASSPRO SL | BASSPRO MICRO | RBC | BASSPRO HUB |
|---------------------------|---|--|--|---|
| Type | 8" (200mm) Powered sealed underseat subwoofer enclosure | 8" (200mm) Powered sealed dockable subwoofer enclosure | Optional RC for BassPro SL & BassPro Micro | 11" (279mm) Spare tyre subwoofer |
| Power Handling, RMS | 125W | 140W | n.a. | 200W |
| Input Sensitivity | 200mV - 20V | 50mV - 20V | n.a. | 0.2V - 10V |
| Frequency Response | 35Hz - 120Hz | 20Hz - 120Hz | n.a. | 30Hz - 175Hz |
| Crossover Frequency/Slope | 50Hz - 120Hz | 50Hz - 120Hz | n.a. | 50Hz - 150Hz |
| Crossover Slope | 12dB/octave | 12dB/octave | n.a. | 24dB/Octave |
| Bass Boost | 0dB to +9dB @ 70Hz | 0dB to +9dB @ 65Hz | n.a. | 0 - 12dB Variable @ Fix 50 Hz |
| Controls | Crossover frequency, phase, bass boost, level, gain | Crossover frequency, phase, bass boost, level, gain | n.a. | Crossover frequency, phase, bass boost, level, gain |
| Connections | High & low-level inputs (RCA) | High & low-level inputs (RCA) | n.a. | High & low-level inputs (RCA) |
| Dimensions (L x W X H) | 344mm x 250mm x 71mm | 411 mm x 177 mm x 275mm | n.a. | (D)360mm x (H)165mm |
| Current Draw (Full Power) | 12A | 14.5A | n.a. | 30A |
| Current Draw (Idle) | <800mA | <800mA | n.a. | <1.2A |
| Fuse | 20A | 15A | n.a. | 30A |
| Dimensions (L x W x H) | 266mm x 180mm x 55mm | 265.3mm x 179.6mm x 54.2mm | 5.4mm x 5mm x 2.3mm | 360mm x 165mm |

| SUBWOOFERS | STAGE 810 | STAGE 1010 | STAGE 1210 | STAGE 1200B | STAGE 1220B |
|------------------------|----------------------|-----------------------|-----------------------|--|--|
| Type | 8" (200mm) Subwoofer | 10" (250mm) Subwoofer | 12" (300mm) Subwoofer | 12" (300mm) Subwoofer sealed enclosure | 2 x 12" (300mm) Subwoofer ported enclosure |
| Power Handling, RMS | 200W | 225W | 250W | 250W | 500W |
| Power Handling, Peak | 800W | 900W | 1000W | 1000W | 2000W |
| Sensitivity (2.83V@1m) | 88dB | 89dB | 91dB | 91dB | 94dB |
| Frequency Response | 38Hz - 200Hz | 35Hz - 200Hz | 34Hz - 200Hz | 34Hz - 200Hz | 34Hz - 200Hz |
| Impedance | 4 ohms | 4 ohms | 4 ohms | 4 ohms | 2 ohms |
| Mounting Depth | 104.8mm | 121.8mm | 162.5mm | N/A | N/A |
| Cutout Diameter | 178.4mm | 231.9mm | 231.9mm | N/A | N/A |
| Dimensions | | | | 266mm x 180mm x 55mm | 794mm x 381mm x 346mm |

| SUBWOOFERS | STAGE 800BA | CSX-1400BP | CS1214T | CLUB WS1200 | CLUB 1024 |
|------------------------|---|--|--|-------------------------------------|--------------------------------|
| Type | 8" (200mm) Powered ported subwoofer enclosure | 12" (300mm) Subwoofer bandpass enclosure | 12" (300mm) Subwoofer ported enclosure | 12" (300mm) Shallow mount subwoofer | 10" (250mm) Subwoofer |
| Power Handling, RMS | 100W | 350W | 250W | 250W | 250W |
| Power Handling, Peak | 200W | 1400W | 1000W | 1000W | 1000W |
| Sensitivity (2.83V@1m) | 50mV - 16V | 93dB | 90dB | 93dB | 92dB |
| Frequency Response | 30Hz - 200Hz | 45Hz - 130Hz | 35Hz - 200Hz | 27Hz - 175Hz | 30Hz - 175Hz |
| Impedance | - | 4 ohms | 4 ohms | 2 or 4 ohms, switch-selectable | 2 or 4 ohms, switch-selectable |
| Mounting Depth | - | - | - | 83mm | 142mm |
| Cutout Diameter | - | - | - | 282mm | 228mm |
| Dimensions | 250mm x 285mm x 263mm / 203mm | 475mm x 412mm x 390mm | 330mm (Tube Diameter) x 660mm | | |

| SUBWOOFERS | S2-1224SS | CLUB 1224 | STADIUM 1024 | STADIUM 1224 |
|------------------------|--|--------------------------------|--------------------------------|--------------------------------|
| Type | 12" (300mm) Subwoofer ported enclosure | 12" (300mm) Subwoofer | 10" (250mm) Subwoofer | 12" (300mm) Subwoofer |
| Power Handling, RMS | 275W | 275W | 450W | 500W |
| Power Handling, Peak | 1100W | 1100W | 1350W | 1500W |
| Sensitivity (2.83V@1m) | 93dB | 93dB | 91dB | 92dB |
| Frequency Response | 25Hz - 175Hz | 25Hz - 175Hz | 30Hz - 175Hz | 25Hz - 175Hz |
| Impedance | 2 or 4 ohms, switch-selectable | 2 or 4 ohms, switch-selectable | 2 or 4 ohms, switch-selectable | 2 or 4 ohms, switch-selectable |
| Mounting Depth | - | 265mm | 175mm | 177mm |
| Cutout Diameter | - | 285mm | 239mm | 282mm |
| Dimensions | 600mm x 330mm x 415mm | | | |



HARMAN International Industries, Incorporated 8500
Balboa Boulevard, Northridge, CA 91329 USA

© 2019 HARMAN International Industries, Incorporated. All rights reserved. JBL, Logic 7 and Plus One (patent no. 7,548,631 B2) are trademarks of HARMAN International Industries, Incorporated, registered in the United States and/or other countries. BassPro and Hear the truth are trademark of HARMAN International Industries, Incorporated. iPhone and iPod are trademarks of Apple Inc., registered in the U.S. and other countries. Features, specifications and appearance are subject to change without notice. Part No. JCCAT1112 EN